

## PerformanceBox Firmware upgrading procedure.

**Install the latest PerformanceTools software on your computer, version 1.8.2, build 07.**

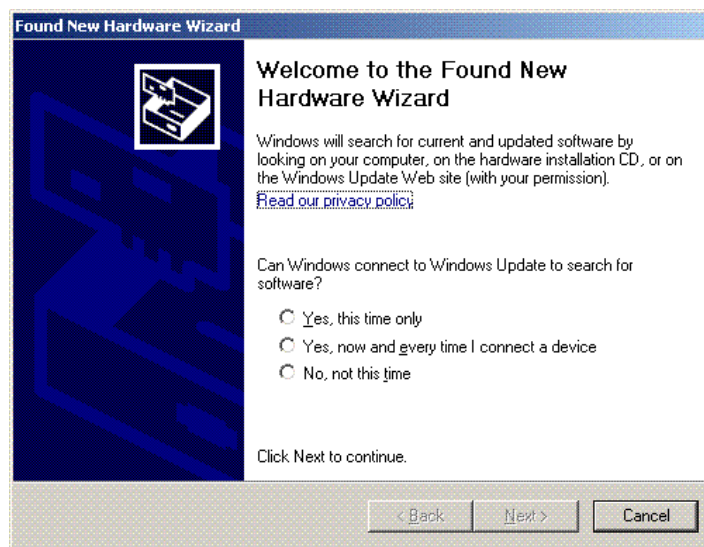
If you have had a previous installation of PerformanceTools software on your computer then please uninstall it first before installation of the new PerformanceTools software. The latest version of software is always available from the PerformanceBox website:

[www.PerformanceBox.co.uk/dlsoftware.html](http://www.PerformanceBox.co.uk/dlsoftware.html)

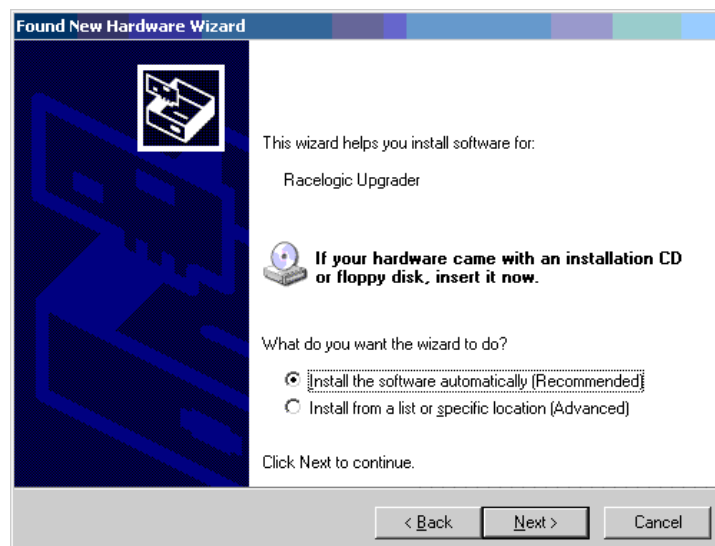
**The PerformanceBox firmware upgrade may not successfully complete if the software is not updated first.**

### Upgrading PerformanceBox firmware.

- Press and hold the **'MODE'** key whilst you connect power to the PerformanceBox.
- The screen should display 'RACELOGIC Upgrader' 'Connect USB Cable'
- Connect the USB cable between the PerformanceBox and your computer.
- Your computer will now recognise the presence of a new device, after a period of time a 'Found New Hardware Wizard' window will appear. See below.



- Click the option 'No, not this time' and click 'Next'
- A new window will appear at this window click 'Next'



- A new 'Hardware Installation' window will appear. Click the button labelled 'Continue Anyway'.



- At the last window click 'Finish' to complete the installation.
- After a short period of time a window will ask you if you wish to reboot your computer, select 'NO'
- Now disconnect the power from the PerformanceBox and then press and hold the '**MODE**' button whilst you reconnect the power. (this re-initialises the PerformanceBox with the computer).
- Now double click on the new PerformanceBox .ruf upgrade file. This will auto-run the firmware upgrade.
- At the end of the upgrade a message will appear to disconnect the PerformanceBox from the computer.
- Now disconnect the power and then reconnect the power and check that the start up screen shows the correct firmware.
- **A Cold Start must now be carried out to re-initialise the PerformanceBox. This is found in the setup menu.**